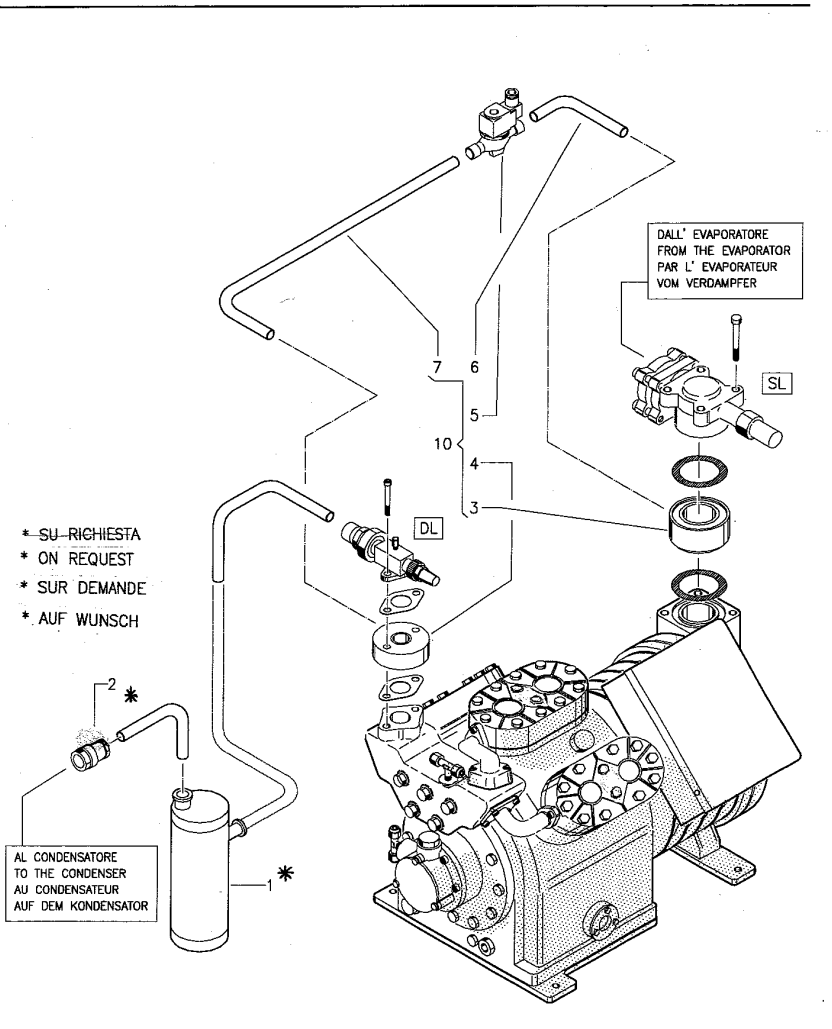


**DORIN**

Partenza a vuoto  
By-pass system  
Demarrage à vide  
Anlaufentlastung

**K3 - K7 Y7  
TK5 - TK7TY**



<p>LA VALVOLA SOLENOIDE DEVE ESSERE NORMALMENTE CHIUSA. VIENE ECOTIATA ED APRE IL BY-PASS ALL'AVVIAMENTO A A VIENE DISECCIATA E CHIUDE IL BY-PASS QUANDO IL COLLEGAMENTO E' PASSATO A Δ (MEGLIO SE 1" - 3" DOPO)</p>	<p>THE SOLENOID VALVE HAS TO BE NORMALLY CLOSED IT IS ENERGIZED AND OPENS THE BY-PASS AT THE START IT IS DE-ENERGIZED AND CLOSED THE BY-PASS WHEN THE CONNECTION PASSED TO Δ (BETTER IF AFTER 1" - 3")</p>	<p>LA SOUPAPE SOLENOIDE DOIT ETRE NORMALEMENT FERMEE, ELLE EST EXCITEE ET OUVRE LE BY-PASS AU DEMARRAGE A A ELLE EST DESEXCITEE ET FERME LE BY-PASS QUAND LA CONNE-XION EST PASSEE AU Δ (MIEUX SI 1" - 3" APRES)</p>	<p>DAS SOLENOIDVENTIL MUB VERSCHALT SEIN, DAS IST ERREGT UND OFFENE DAS BY-PASS MIT DEM ANLASSEN DAS IST UNERREGT UND SCHLIEBT DAS BY-PASS WANN DER VERBINDUNG IST Δ (BESSER 1" - 3" NACH)</p>
--	--	--	--

Officine Mario Dorin S.p.A.;

Via Aretina 388,

50061 Compiobbi - Firenze - Italia

Phone 0039 055 623211

Fax 0039 62321380

[www.dorin.com](http://www.dorin.com)

IO 004-05A